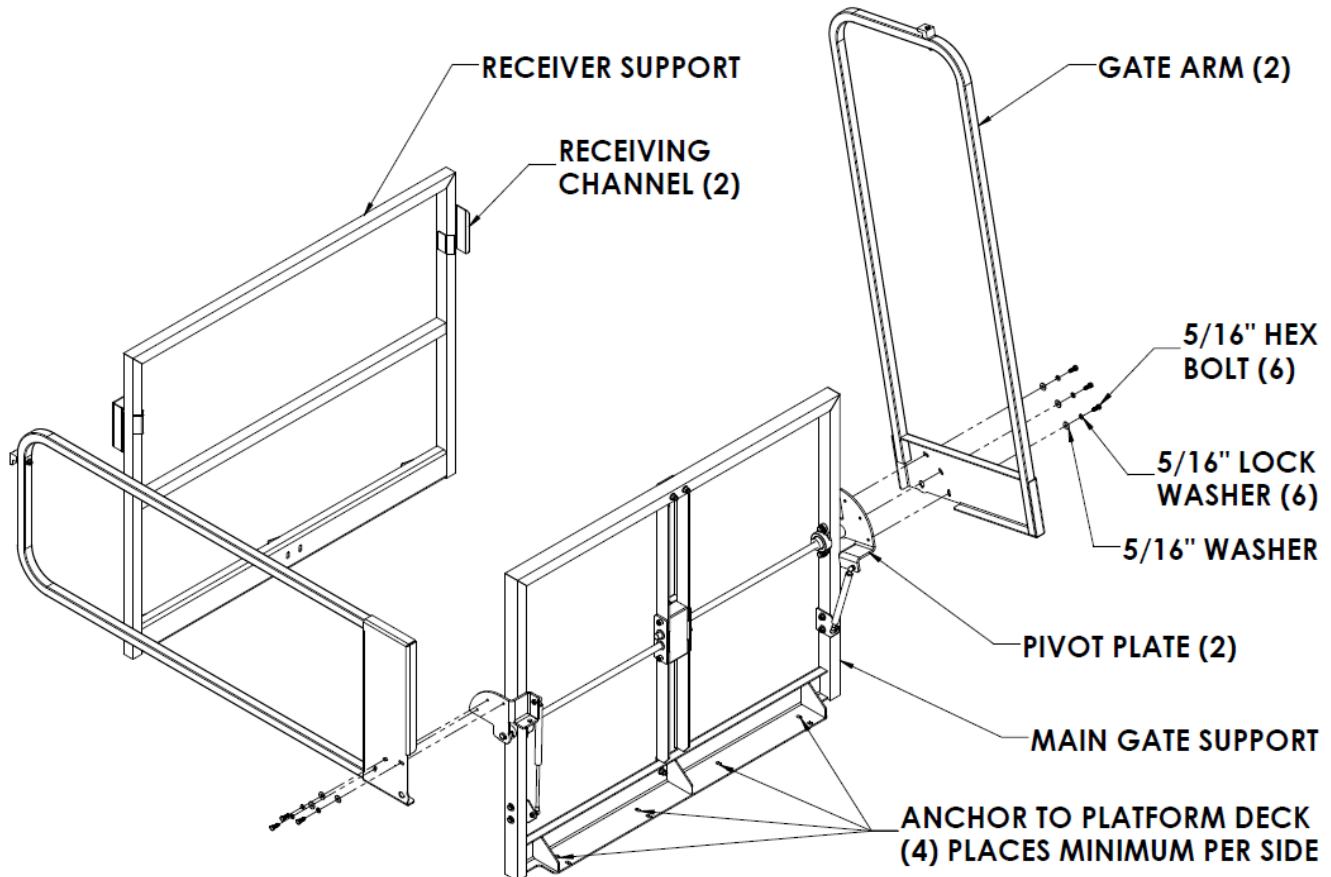


The Fabenco MZ CH-Clear Height Gate Series utilizes a counterbalance system to ensure that one gate is always between the employee and the fall edge of the platform.

Suggested Tools for installation: Socket set with 1/2" socket and a 1/2" wrench.

Safety Notice: Assemble the unit away from the fall edge. After Assembly is complete, move the clear height gate to the fall edge and anchor to the deck.



Step 1: Attach gate arms to the main gate support using the provided 5/16" fastener hardware as illustrated above.

Step 2: Position the main gate support assembly at the fall edge of the platform deck. Please note: this assembly must be perpendicular to the fall edge with the end of the gate support flush with the fall edge of the deck.

Step 3: Secure the main gate support assembly to the platform deck at a minimum of 4 places. Securing hardware not provided by Fabenco, Inc.

Step 4: Position the receiver support, ensuring that both gate arms nest properly into the receiving channels when the gate arms move into open and closed positions. The gate arms must not bind when rotated into the receiving channels.

Step 5: Secure the receiver support to the platform deck at a minimum of 4 places. Securing hardware not provided by Fabenco, Inc.

ANNUAL INSPECTION PROCEDURE

- Verify that all fasteners are tightened.
- Replace any missing fasteners.
- Inspect product for any damage. Replace if damage is found.